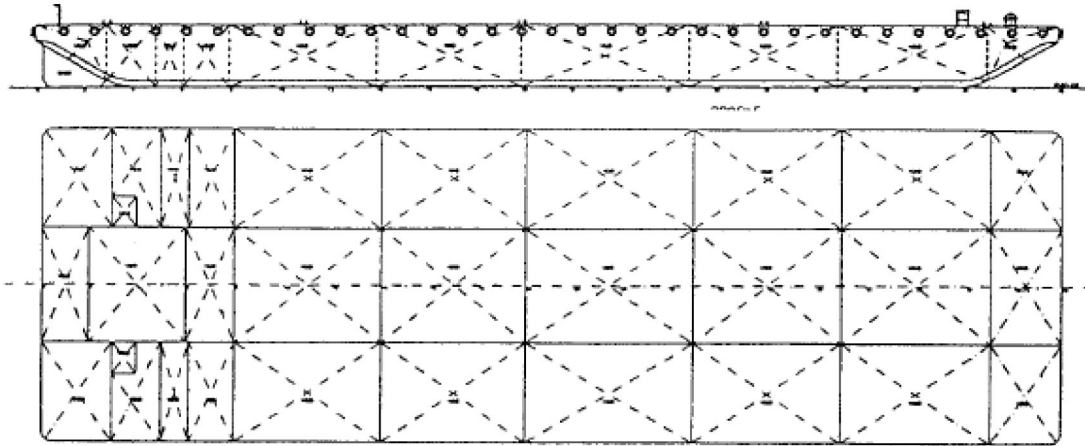


Sea Foster



330 X 100 X 20 ft / 11,500 (TONS) DWT / DECK/ TANK BARGES

Name of Vessel	Sea Foster
Year Built / Registry	1995 /Indonesia
Principal Dimensions	330 x 100 x 20 ft (100.58 x 30.48 x 6.1 m)
Classification	ABS + A1 Deck Barge (designed and built as tank barge)
Draft	15.55' (4.741 m)
Deadweight	11,512 t (GRT 4917, NRT 1475)
Deck Loading	10 t/m ²
Hull Plating Thickness	Deck plating thickness 20 mm Bottom plating thickness 12-16 mm
Bulkheads	2 longitudinal b/h plating thickness 12 mm 8 transverse b/h plating thickness 12 mm
Tanks	31 tanks
Outfitting	31 manholes with recess type at center and non recess type at shipsides, vertical ladder 58 sets, tyre fenders heavy duty 84 sets dia 1500 mm thickness 500 mm.
Deck Equipment	Tow brackets 3 sets each at bow and stern 1 x 2000 kg anchor with manual winch dia 64 mm x 6 m 6 sets of double bollard and 2 sets of single bollard on each Port and Starboard side; 3 sets Towing brackets at bow and 2 sets at stern all fitted with chaffing chain.
Painting	Exterior blasted to SA2.5 coated with International Paints system; Internal blasted to SA 2.5 coated with tar Epoxy 2 x 125 um.

Particulars given herein are believed to be correct but not guaranteed. Owners reserve the rights to amend specifications without notification.